

Canada Winter Games: Feb 12th – March 1st 2015



CCBC Annual General Meeting: Kamloops May 2nd 2015



jeuxducanada2015.ca

Road to the Games



- Bid estimates 2010 *Awarded Sept 2010*
- Land acquisition 2010 – 2013
- Project definition & design 2011 - 2012
- Budgets & fund raising 2011 - 2014
- Construction 2012 – 2014
- Officials Training 2012 – 2015
- Test Events 2013 - 2014
- Event Management 2015



The Bid



May 2010 Bid Estimates

- **\$1.6 million capital**
- **\$400K operating & volunteer**

The Bid



May 2010 Bid Estimates

- **\$1.6 million capital**
- **\$400K operating & volunteer**

Actual Bid

- **\$350,000 capital**
- **Blended volunteer cost mostly within host society budgets**

Significant Issue for CNSC



Project Definition Report



Otway Nordic Ski Centre Project Definition Report



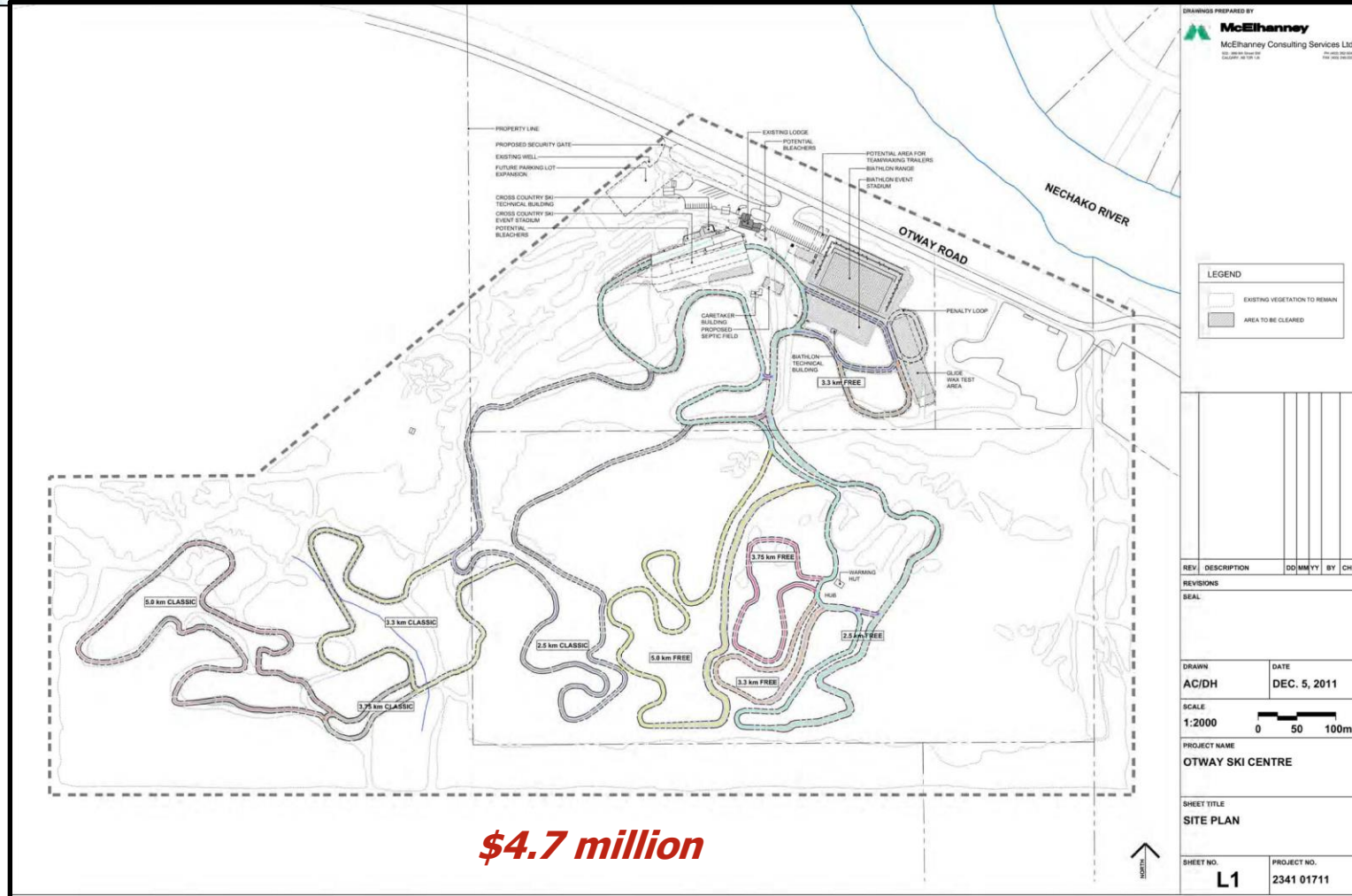
Prepared for:
Caledonia Nordic Ski Club
PO Box 1243
Prince George BC V2L 4V3

Prepared by:
McElhanney Consulting Services Ltd.
1633 First Avenue
Prince George BC V2L 2Y8

January 2012



\$31,000



\$4.7 million

Refined Scope - Facilities



2015 Canada Winter Games targets

- 5km red course (XC)
- 5km blue course (XC & Biathlon)
- XC technical building
- XC Stadium
- Biathlon technical building
- Biathlon range & stadium
- Infrastructure – electrical services, parking, landscaping



Budgets & Fund Raising



3 Year Project Plan - Grants

- **\$350,000 CWG funding from Federal, Province, Municipality**
- **\$428,000 Infrastructure grant from Province**
- **\$30,000 Northern Development Initiatives Trust**

Subtotal \$800,000

\$800,000 External Funding

\$300,000 Internal Funding -club reserves & log sales

\$600,000 In kind

Total \$1.7 million

BUILDERS WALL

Caledonia Nordic Ski Club

Cross Country and Biathlon Technical Buildings

IDL Projects Ltd	foundations
All-West Glass	windows & doors
Winton Global Homes	trusses
CanaSteel Rebar	rebar
West Fraser Mills	plywood
Conifex Timber Inc	lumber
Interfor	cedar siding
Carrier Lumber	transportation
Centre City Electric	electrical
Westcana Electric	electrical
GeoNorth Engineering	geotechnical
Access Engineering	building design
L&M Engineering	septic design
Finning Tractor	equipment
Dave Jacobs	earthwork, fuel
Portal Installations	overhead door
Hardwoods	plywood
Paradise manufacturing	cabinetry
New Look Interiors	paint
Northern Development Initiative Trust	funding



Stadiums & Competition Courses

Dave Jacobs	earthwork, fuel
Brandt Tractor	equipment
Finning Tractor	equipment
Double D Logging	equipment
A.L. Sims & Son	equipment
Martin Daburger	equipment
GeoNorth Engineering	mapping services
Stella Jones	power poles
Canada Winter Games	capital funding

Province of BC:

Ministry of Communities Sport & Culture Infrastructure Grant
Ministry of Forests Lands & Natural Resources Operations



Caledonia Nordic Ski Club is proud to recognize the generous outpouring of community and provincial support for the development of facilities at the Otway Nordic Centre. The businesses, individuals and government agencies recognized above and the numerous volunteers deserve recognition as true community builders. Special mention for the steadfast support of our MLAs Shirley Bond; MLA Prince George Robson Valley, Minister Transportation & Infrastructure and Pat Bell; MLA Prince George Mackenzie, Minister Tourism, Jobs and Skills Training

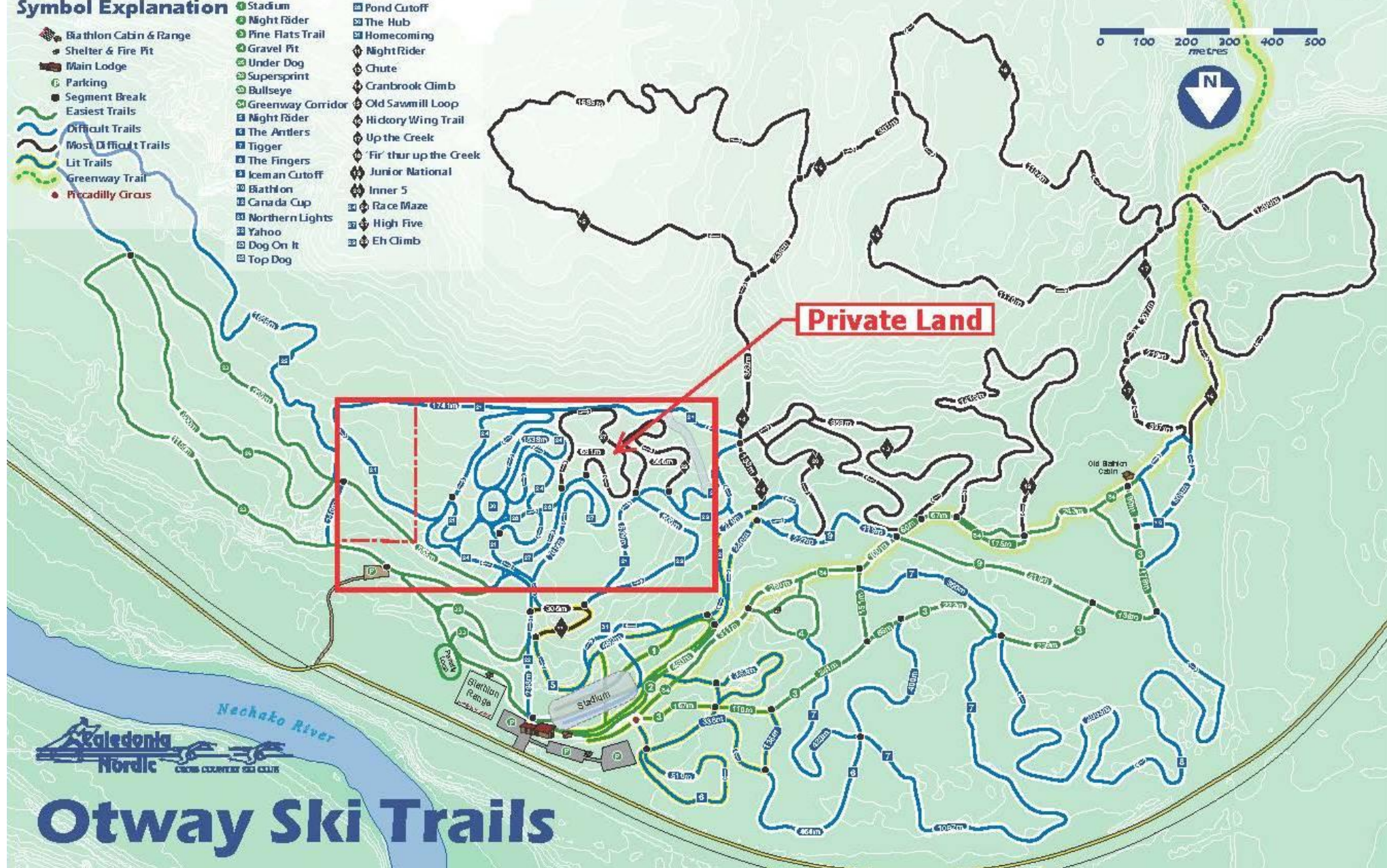
Thank You: Caledonia Nordic Ski Club

Completed a \$1.7 million upgrade in 2014

LAND ACQUISITION

Symbol Explanation

- | | | |
|------------------------|-------------------|------------------------|
| Bathalon Cabin & Range | Stadium | Pond Cutoff |
| Shelter & Fire Pit | Night Rider | The Hub |
| Main Lodge | Pine Flats Trail | Homecoming |
| Parking | Gravel Pit | Night Rider |
| Segment Break | Under Dog | Chute |
| Easiest Trails | Supersprint | Granbrook Climb |
| Difficult Trails | Bullseye | Old Sawmill Loop |
| Most Difficult Trails | Greenway Corridor | Hickory Wing Trail |
| Lit Trails | Night Rider | Up the Creek |
| Greenway Trail | The Antlers | Fir' thur up the Creek |
| Picadilly Circus | Tigger | Junior National |
| | The Fingers | Inner 5 |
| | Keman Cutoff | Race Maze |
| | Bathalon | High Five |
| | Canada Cup | Dog On It |
| | Northern Lights | Top Dog |
| | Yahoo | |
| | Dog On It | |
| | Top Dog | |



Otway Ski Trails

Homologation Design – August 2011



Homologation Design – August 2011





**Design & Layout
2011 - 2012**





Brush Flail on Blue Course



DANGER
Flying Debris!!
Stay Back 70 m.



Minimal Debris Disposal



Race Maze - Sept 2011

August 2012 – Red Course

***Site
Preparation***





Feller Buncher



Short Log Forwarder



*Log Processor
September 2012*



Moving Decked Logs

September 2012



October 2012



**Grinding logging debris
for wood pellets**



**Stadium & Range
Bandit "Beast" Grinder**



Grubbing Operation
September 2012



Excavator donated by
Brandt Tractor



Grade Construction October 2012



PRINCE GEORGE



— JEUX DU —
CANADA
— GAMES —
2015



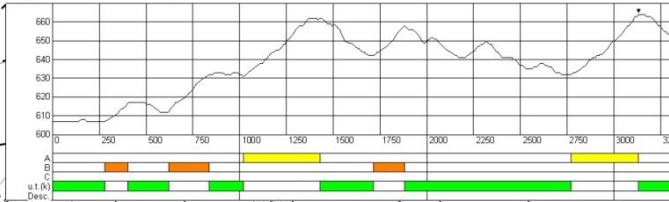
0 50
Contour



2015 Canada Winter Games

CATEGORY	YEAR OF BIRTH	F
U-23	1992 & later	3 x

Blue 5.0 km
 Course length: 4910m
 Category: D
 Competition Level: COC/FIS
 Height Difference (HD): 58m
 Maximum Climb (MC): 32m
 Total Climb (TC): 173m
 Lowest point: 606m
 Highest point: 664m



*Blue Course
October 2012*



*Stripping windrows
left in place for ski 2013 season*

***Blue course grade
finished with Log Drag***



Log Drag

July 2013

PRINCE GEORGE

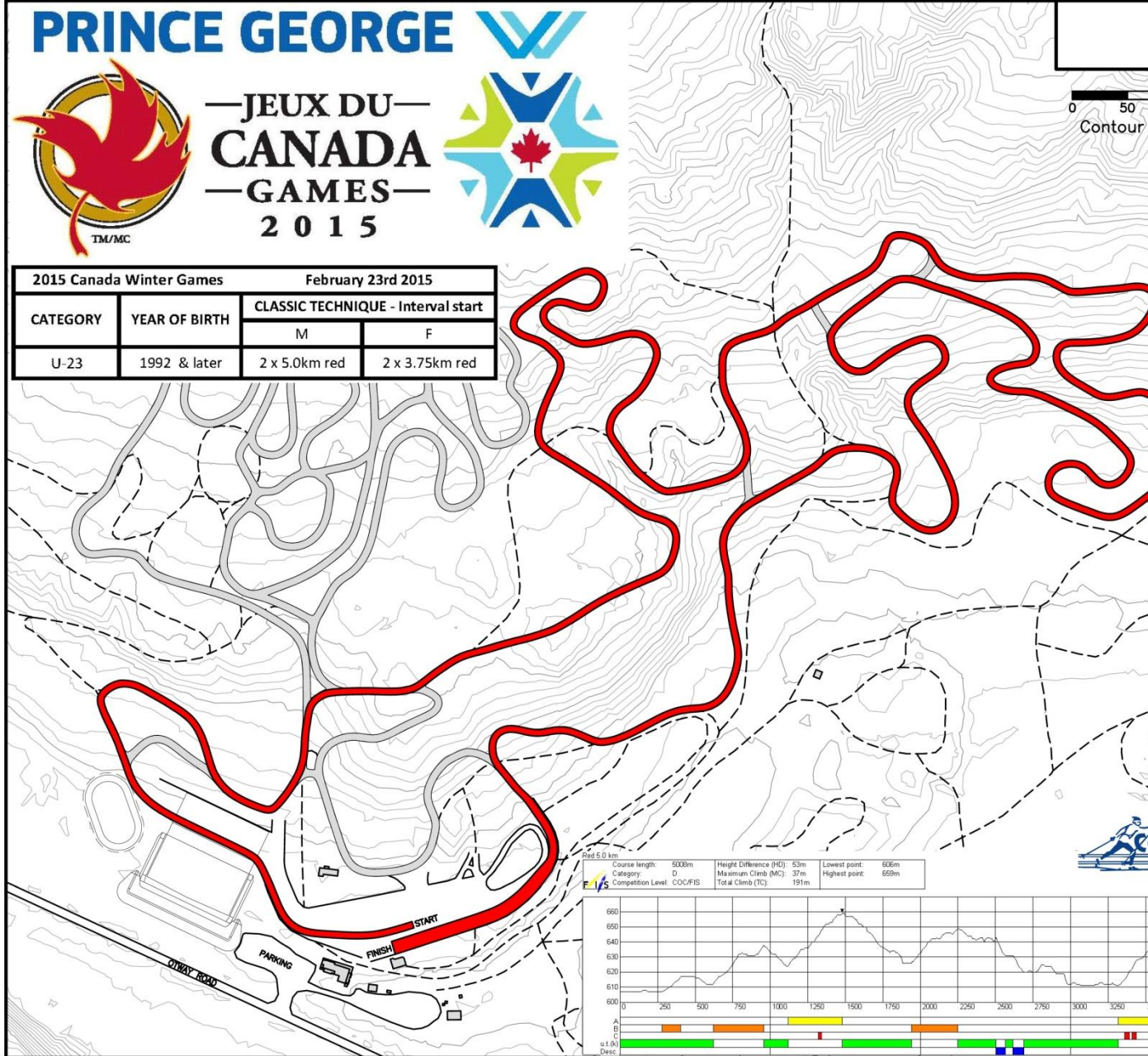


—JEUX DU—
CANADA
—GAMES—
2015

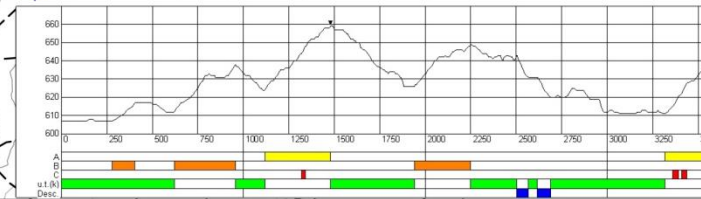
0 50
Contour

2015 Canada Winter Games February 23rd 2015

CATEGORY	YEAR OF BIRTH	CLASSIC TECHNIQUE - Interval start	
		M	F
U-23	1992 & later	2 x 5.0km red	2 x 3.75km red



Red 5.0 km
Course length: 5000m
Category: D
Competition Level: COC/FIS
Height Difference (HD): 53m
Maximum Climb (MC): 37m
Total Climb (TC): 191m
Lowest point: 606m
Highest point: 659m



*Excavator donated by
Brandt Tractor*



*Red course
September 2012*



*More significant
grade work*



Dave Jacobs – October 2012
Excavator Donated by Brandt Tractor





*Geotextile fabric
Bottom Inner 5 Chute*



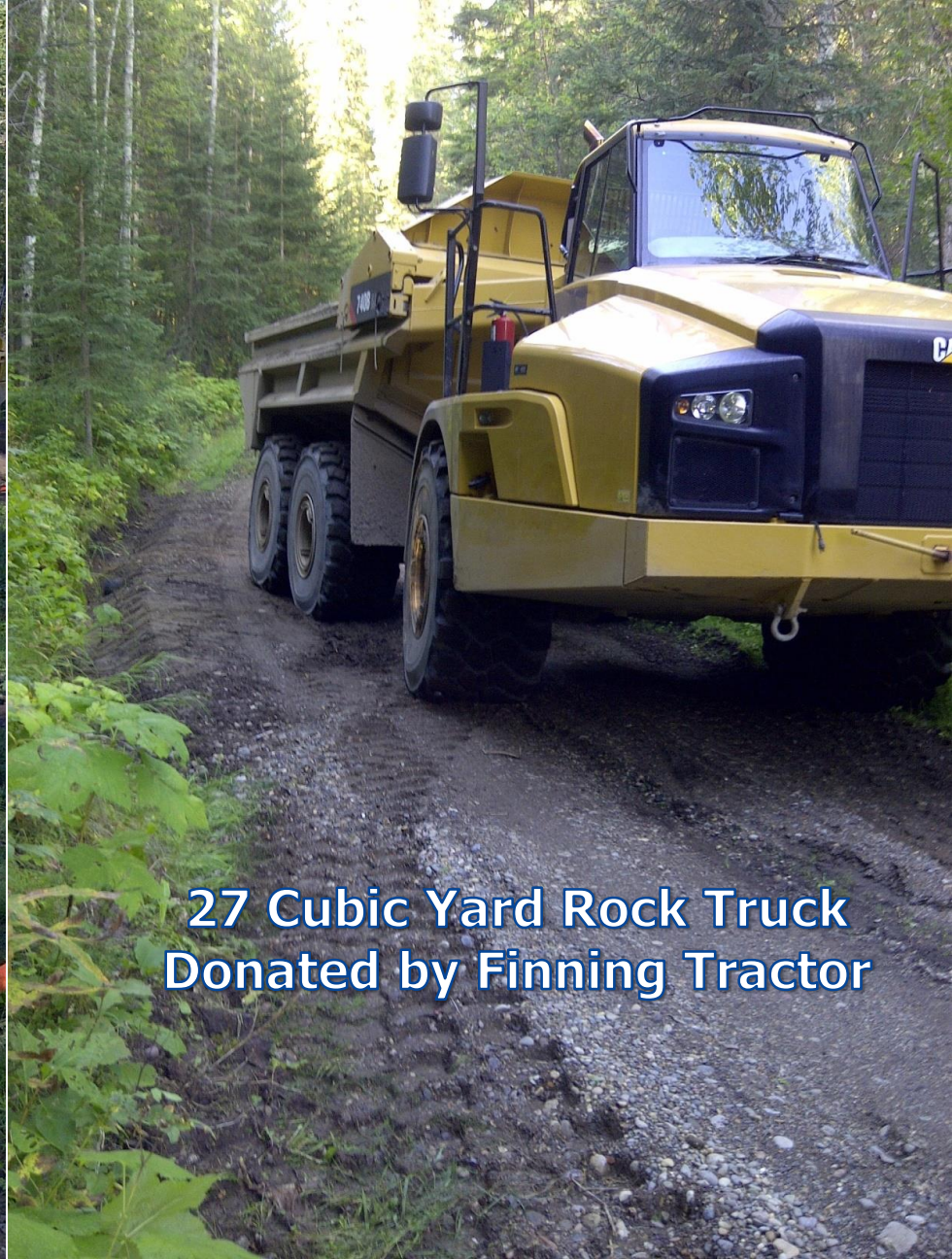
Fill Instructions





*Low Ground Pressure Tires
Moving Floor*

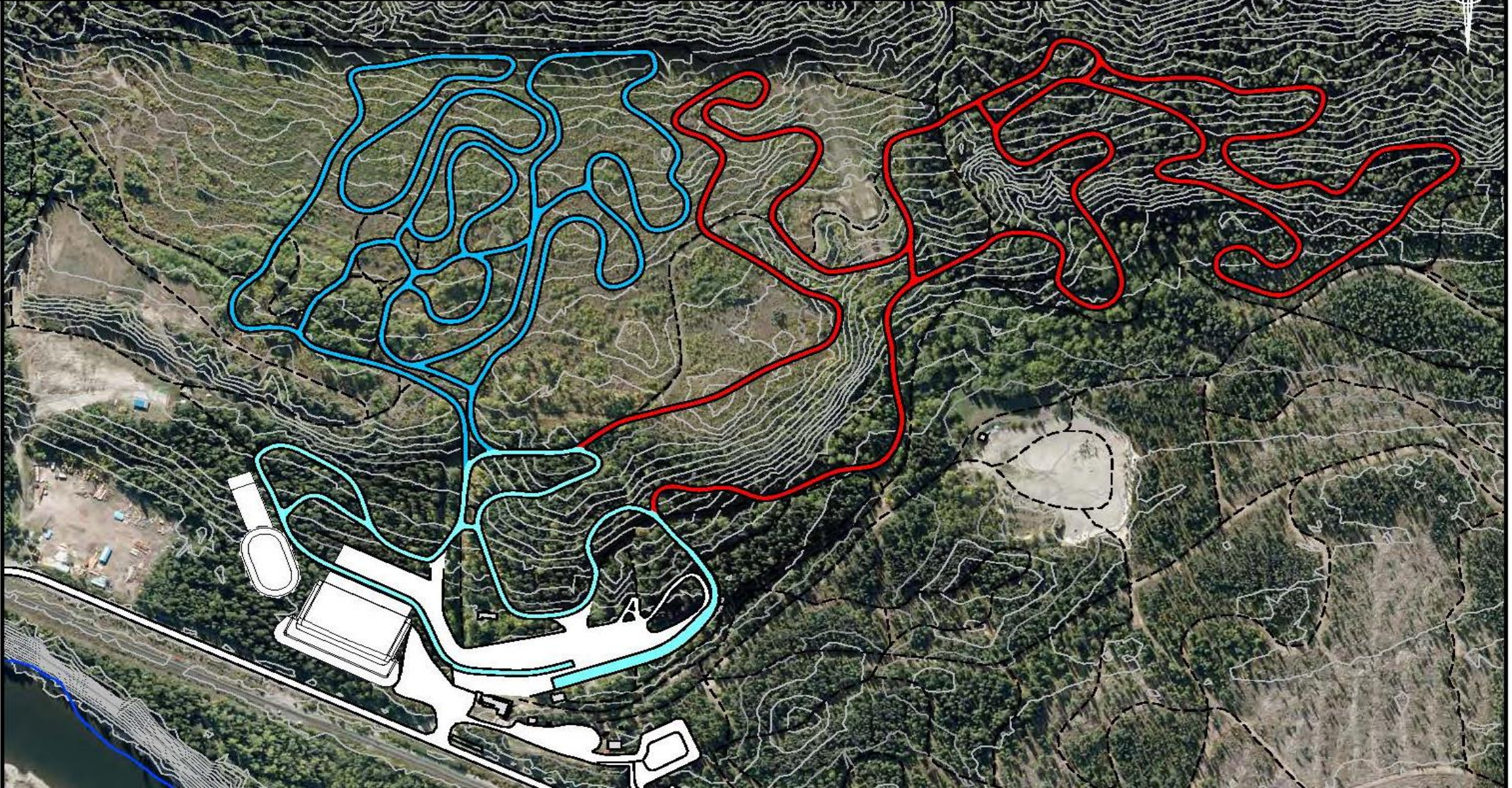
August 2013



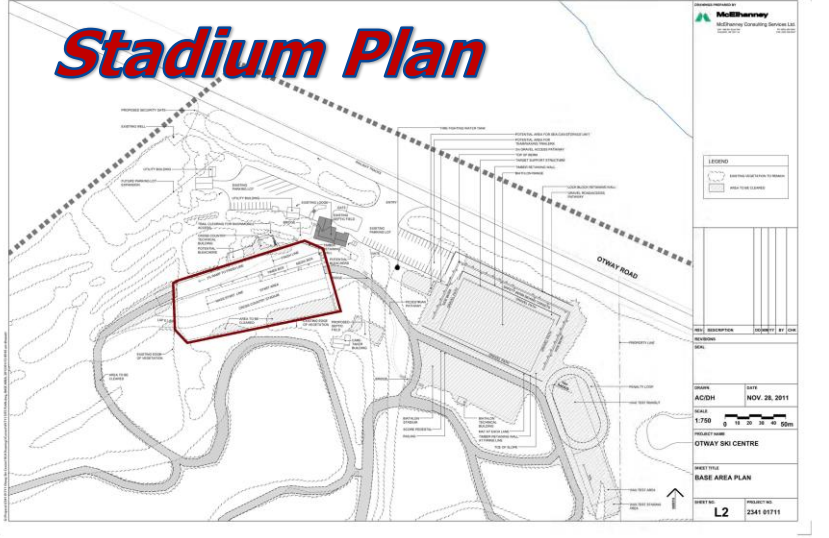
*27 Cubic Yard Rock Truck
Donated by Finning Tractor*

Course Construction Complete for 2014 Ski Season

0 50 100 150 200 METERS
Contour Interval is 2 m



Stadium Plan



DUCKS

Cross Country Stadium
May 2013



Long Track D6 Dozer



Geotextile Fabric



Standing Water



Organic Soils



Finish Grading
August 30, 2013

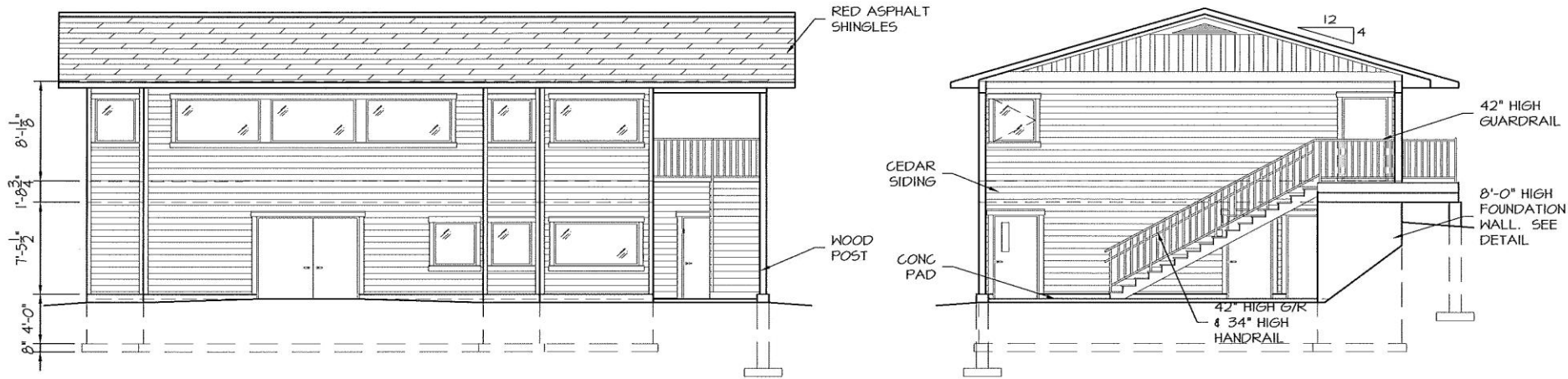


Gravel Pit

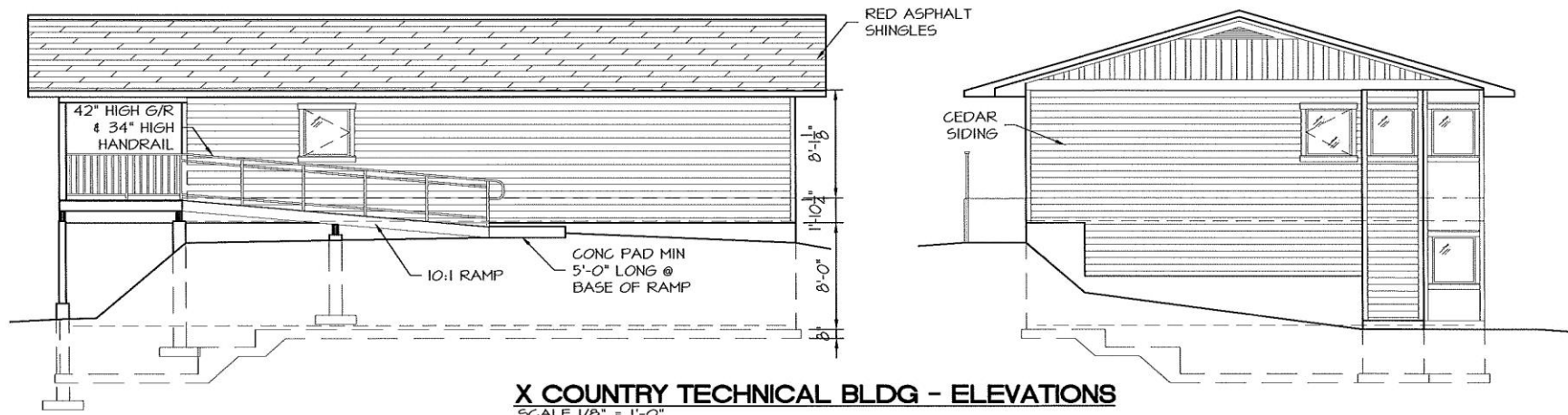
8000 Cubic Yards
Hauled to Stadium



Building Design *donated by Access Engineering*



X COUNTRY TECHNICAL BLDG - ELEVATIONS
SCALE 1/8" = 1'-0"



X COUNTRY TECHNICAL BLDG - ELEVATIONS
SCALE 1/8" = 1'-0"

Cross Country Technical Building Plans – August 2013

ACCESS
ENGINEERING CONSULTANTS LTD.

1484, 2nd Avenue
V2L 3E6

PRINCE GEORGE, B. C.
TEL: 562-9345
FAX: 563-4878

DWG TITLE	ELEVATIONS	
PROJECT	X COUNTRY TECH BUILDING	
CLIENT	CALEDONIA NORDIC SKI CLUB	
DATE	AUG. 19, 2013	ENGINEERING DESIGN FERGUS FOLEY, P.ENG
SCALE	AS NOTED	CO-DESIGNER
DRAWN BY	V. CASE / JM	CHECKED FF
PROJ. NO.	13008-2	DWG NO. TECH A1
		ACAD FILE 13008-TECH-13-08-19-FC

Technical Building Construction



Building Site
September 20, 2012



Foundation Excavation
July 24, 2013



*Geotechnical Report
donated by
GeoNorth Engineering*



Footing Forms



*Footing Pour
July 26, 2013*



***Pour Foundation
& Retaining Wall***



Rebar & Form Spacers



***Forming Foundation
& Retaining Wall***

Foundation Donated by IDL Projects



Completed Foundation
July 31, 2013





Backfill & Compact Foundation
August 15, 2013
Gravel Haul into Stadium Begins



Electrical Services



Water Services



***Temporary Services Installed
Floor Ready for Pouring
August 28, 2013***





*Concrete Donated
by
Inland Cement*



Counters



*Roof & Floor Truss Donated by
Winton Global Homes*



Drywall



Materials Donations

- ***Plywood - West Fraser Mills***
- ***Dimension lumber - Conifex Timber***
- ***Cedar Siding - Interfor Corp***
- ***Transport - Carrier Lumber***





*Framing & Roof by Groot Construction
October 29, 2013*



**Doors & Windows Donated
by
AllWest Glass**

BC Championships – Feb 18-19, 2013



***Timing Building incomplete
Courses to rough grade with debris windrows***



Cabinetry Donation
by

Paradise Manufacturing



Paint



Rubber Flooring Tiles
June 2014



WC accessible
Washrooms

April 2014

*Cedar Siding
donated by
Interfor Corp*





*Cross Country Technical Building
April 2014*

Cross Country Skiing

Haywood/NorAm Western Canadian Championships



“The quality of facilities and trails now available at Otway as a result of volunteer efforts and investment by public and private supporters over the past 3 years is second to none in Canada and would make many World Cup sites envious.” The Nordic athletes at the 2015 Canada Winter Games are sure to have a tremendous experience next season.”

Dave Dyer – Cross Country Canada









Officials Training



Officials Training	2012		2013		2014		2015		combined	
	courses	participants	courses	participants	courses	participants	courses	participants	courses	participants
Level 1	1	12	1	11	1	11	3	35	6	69
Level 2	1	8			1	8			2	16
Zone 4 intro	1	6							1	6
Zone 4 adv	1	4							1	4
PN Workshop							1	16	1	16
Travel Assignments				8		2				10
totals	4	30	1	19	2	21	4	51	11	121
costs		\$4,000		\$10,200		\$2,600		\$4,900		\$21,700

Host Society Org Chart



Cross country volunteer sport team

A New Perspective

Otway Nordic Centre venue team

2015 Canada Winter Games



OPENING CEREMONIES

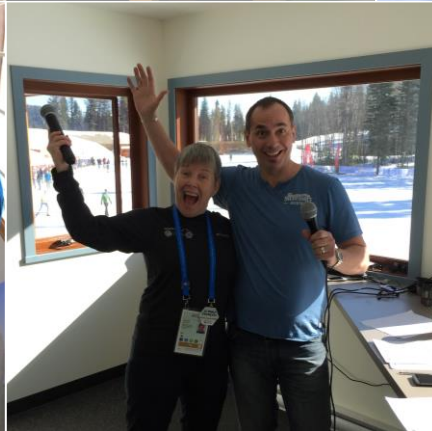












DAY 1 - Distance – Classic Technique

1st	Andy Lin (Nordic Racers)	Men Standing
1st	Emily Suchy (Revelstoke)	Women Sit-ski
2nd	Emily Weekes (Hollyburn)	Women Standing
5th	Colin Ferrie (Kimberley)	Men
6th	Geoffrey Richards (Black Jack)	Men
7th	David Palmer (Black Jack)	Men
9th	Hannah Mehain (Sovereign Lake)	Women
10th	Eliza-Jane Kitchen (Hollyburn)	Women

DAY 2 – Sprints, Classic Technique

1st	Colin Ferrie (Kimberley)	Men
1st	Emily Suchy (Revelstoke)	Women Sit-ski
2nd	Andy Lin (Nordic Racers)	Men Standing
2nd	Emily Weekes (Hollyburn)	Women Standing
3rd	Ethan Hess (Spud Valley)	Men Sit-ski
6th	Julien Locke (Black Jack)	Men
7th	Katie Weaver (Hollyburn)	Women
9th	Molly Miller (Kimberley)	Women

DAY 3 - Distance – Free Technique

<i>1st</i>	<i>Emily Suchy (Revelstoke)</i>	<i>Women Sit-ski</i>
<i>2nd</i>	<i>Emily Weekes (Hollyburn)</i>	<i>Women Standing</i>
<i>3rd</i>	<i>David Palmer (Black Jack)</i>	<i>Men</i>
<i>4th</i>	<i>Geoffrey Richards (Black Jack)</i>	<i>Men</i>
<i>7th</i>	<i>Colin Ferrie (Kimberley)</i>	<i>Men</i>
<i>9th</i>	<i>Eliza-Jane Kitchen (Hollyburn)</i>	<i>Women</i>
<i>10th</i>	<i>Hannah Mehain (Sovereign Lake)</i>	<i>Women</i>

DAY 4 – Relays – Mixed Technique

2nd	Eliza Jane Kitchen (Hollyburn)	Women
2nd	Hannah Mehain (Sovereign Lake)	Women
2nd	Molly Miller (Kimberley)	Women
2nd	Katie Weaver (Hollyburn)	Women
3rd	Geoffrey Richards (Black Jack)	Men
3rd	David Palmer (Black Jack)	Men
3rd	Colin Ferrie (Kimberley)	Men
3rd	Julien Locke (Black Jack)	Men

2015 Flag Points rankings

<i>Division</i>	<i>Female</i>	<i>Male</i>
BC	100 pts	100 pts
ON	90	90
QC	80	80
AB	60	70
YK	70	60

This means our Women's team and Men's team were both ranked #1, and BC ranked #1 overall. That is a best ever performance for our division!



CLOSING CEREMONIES

